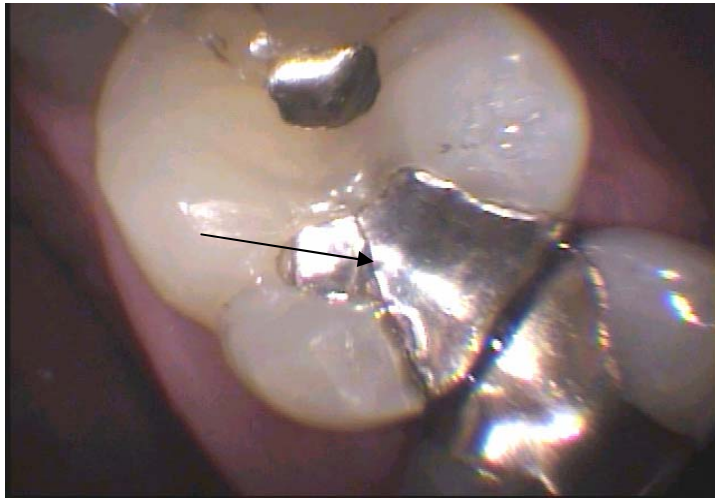


DENTAL HEALTH CONCERNS

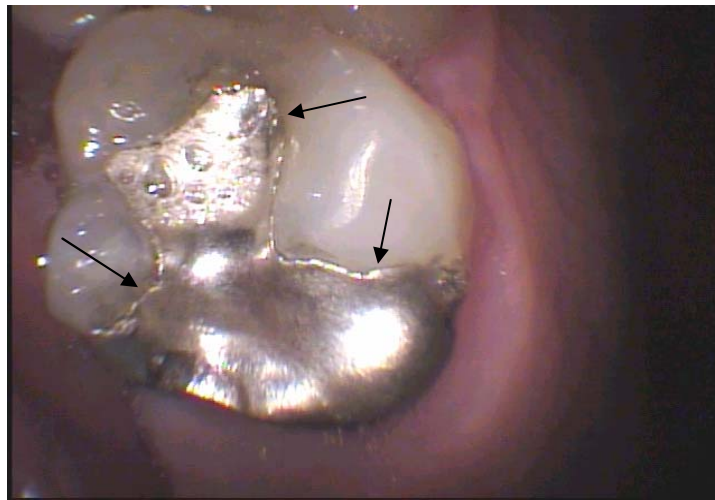
This shows an old amalgam filling with a crack in it. Cracked fillings are a problem because they leak into the tooth and cause it to decay.

When treated early, the filling can be easily removed and a new, tooth colored filling can be placed resulting in a stronger, healthier and more natural looking tooth.



This shows an old, very large amalgam filling that is starting to show signs of wear and breakdown around the edges.

There are several ways to restore a tooth such as this. The best ways are with an inlay or a crown. Today, we use ceramic materials that look like natural teeth. However, gold is a viable option in some situations.



These are old porcelain fused to metal crowns that are compromised because of gum recession that has exposed the roots which led to decay at the interface between the root of the tooth and the margins of the crowns.

The decay works its way underneath the crowns. Often, if detected early, the margin can be repaired with a filling. If the decay progresses into areas that are not accessible, then a new crown needs to be made.

