

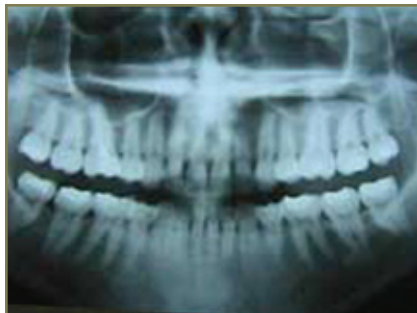
INITIAL VISIT SERIES

Panographic X-rays

Why do I need panographic x-rays?

A panographic x-ray gives us a comprehensive view of your mouth, including your teeth, jawbone, jaw joint, and the sinuses. It gives us valuable information about a variety of oral conditions, including:

- Position of wisdom teeth
- Jaw-joint problems
- Sinus problems
- Receding bone levels resulting from periodontal disease
- Abscesses



A panographic x-ray



The camera rotates around you



Protective apron

What happens during the procedure?

First we cover you with a lead apron to protect the rest of your body while we take x-rays of your mouth. Then the x-ray film is positioned outside your mouth, and the x-ray head rotates around you.

Are panographic x-rays safe?

Dental x-rays use high-speed film, so the amount of radiation exposure is very low.

Though machines vary, a panographic x-ray adds only about as much radiation as you'd get in 10 days from natural sources such as sunlight, minerals in the soil, home appliances, and through the atmosphere from space.

Even if you've recently had x-rays taken of other parts of your body, a panographic x-ray doesn't add to the total amount of radiation in your system because x-ray radiation does not stay in the body.

Panographic x-rays are comfortable and safe. They give us vital information that we can't get from any other source.