
IMPLANTS ONLY

IMPLANTS ONLY

- ❑ Who are we?
- ❑ What do we do?
- ❑ What can we do for your laboratory to increase products and services that you can offer to your dentists?
- ❑ What can we do for your dental practice to increase products and services that you can offer to your patients?

WHO ARE WE?

❑ Implants Only

- ❑ We are a small company that is staffed by
 - ❑ Board Certified Prosthodontist
 - ❑ Certified Dental Laboratory Technician
 - ❑ Dental Hygienist
 - ❑ Dental auxiliaries who each have more than 20 years of dental experience.
- ❑ Our vast experience, coupled with our state of the art laboratory technologies, allows us to offer you outstanding **implant and natural tooth** solutions.

WHAT DO WE DO?

❑ Implants Only

- ❑ Produces custom abutments for implants
- ❑ Produces custom implant bridges
- ❑ Produces “All Ceramic” restorations for natural teeth.
 - ❑ Procera restorations for single teeth
 - ❑ Procera fixed partial dentures (bridges)

WHAT CAN WE DO FOR YOU?

❑ Implants Only

- ❑ Current research demonstrates that “All Ceramic Zirconium and Aluminum Oxide” restorations should have adequate substructure support and a minimal amount of veneered porcelain
- ❑ For that reason, we offer shaded copings that are “double scanned” to minimize risk of fracture, but are truly aesthetic

WHAT CAN WE DO FOR YOU?

❑ Implants Only

- ❑ We offer our services to all dental laboratories that don't have the technical equipment we own, so that they can produce Procera restorations for their dental clients
- ❑ If your laboratory cannot produce Procera restorations for natural teeth or for dental implants, you can outsource your case to **Implants Only** so that we can assist you in the fabrication of copings, abutments and substructures

DEMAND



- ❑ Implant dentistry is here to stay
- ❑ More patients are having implant treatment
- ❑ More dentists are providing implant treatment
 - ❑ No longer just the specialists

DEMAND

- ❑ Dr. Misch is advertising all the time to teach more dentists to place implants
- ❑ He says they “can’t afford” to not enter the world of implant dentistry
- ❑ The same is true for the dental laboratories

MISCH
INTERNATIONAL
IMPLANT INSTITUTE

Can You Afford to Enter the
World of Implant Dentistry?

Actually, You Can't Afford Not To.

As a dental practitioner, you have the opportunity to improve your patients' health, and your bottom line by offering the services of implant dentistry.

15-Day Surgical Program
Orlando, Florida

9-Day Prosthetic Program
Chicago, Illinois; Orlando, Florida

12-Day Surgical Program

DEMAND

- ❑ Other labs are already soliciting for implant and “all ceramic” restorations
- ❑ Their prices are low
- ❑ You can offer the same services and maintain your personalized service to your client base



ATLANTIS™ **FREE SHIPPING**

It's difficult to price an implant case.

At Pacific Dental Laboratory we do the hard job: we offer custom abutments with access for a set price. You, the confidence to know your patient is getting an abutment specifically tailored to their needs and know your costs ahead of time, no surprises, no callbacks, no worries.

For your convenience, Pacific Dental Laboratory now offers a downloadable USPS mail label in every package. Simply print the label, place it on your package and hand the package to your postal carrier.

For more information contact Pan Am Dental Enterprises at 888-728-2635 or visit us at our website: www.panam.com for contact information, shipping links, downloadable file forms and product specs.

PAN-AM also features:

Lava™	\$195
Procera®	\$125
Cercon™	\$125
Wol-Ceram™	\$99
Captek™	\$99
Porcelain to High Noble	\$99
SmileTempo	\$29

AstraTech Dental is a registered trademark of the AstraZeneca Group.

COST COMPARISON

- ❑ Conventional Crown and Bridge
 - ❑ Metal costs vary
 - ❑ High noble
 - ❑ Non Precious
 - ❑ Typically
 - ❑ 2 dwt of high noble alloy costs more than an “all ceramic” core



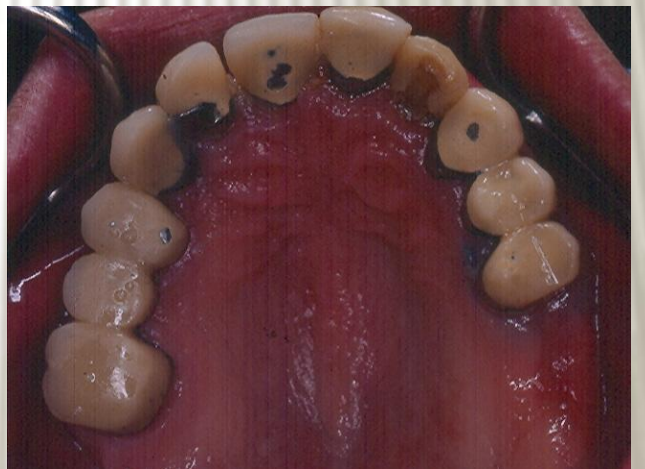
COST COMPARISON

- ❑ Custom abutment
 - ❑ Cast
 - ❑ Gold cylinder \$220
 - ❑ Metal \$65
 - ❑ Total = \$285
 - ❑ Procera
 - ❑ Titanium \$192
 - ❑ Zirconium \$246



AESTHETIC COMPARISON

- ❑ No visible metal
- ❑ No exposed metal occlusal surfaces



AESTHETIC COMPARISON

- No “grey line”
at cervical



AESTHETIC COMPARISON



SAMPLE CASES

SAMPLE CASES

TITANIUM ABUTMENTS

TITANIUM ABUTMENTS

REPLACE SELECT IMPLANTS, TITANIUM ABUTMENTS AND PFM CROWNS

- ❑ Replace Select Implants
 - ❑ 6-9 is 4 unit bridge
 - ❑ Fractured connector between 8 and 9



REPLACE SELECT IMPLANTS, TITANIUM ABUTMENTS AND PFM CROWNS

- ❑ Replace Select Implants
 - ❑ Bridge removed except 9
 - ❑ 6 can be sectioned from bridge and reused



REPLACE SELECT IMPLANTS, TITANIUM ABUTMENTS AND PFM CROWNS

- ❑ Replace Select Implants
 - ❑ Custom Procera titanium abutments
 - ❑ 7/8 splinted implant crowns
 - ❑ 6 and 9 original crowns



ZIRCONIUM ABUTMENTS

ZIRCONIUM ABUTMENTS

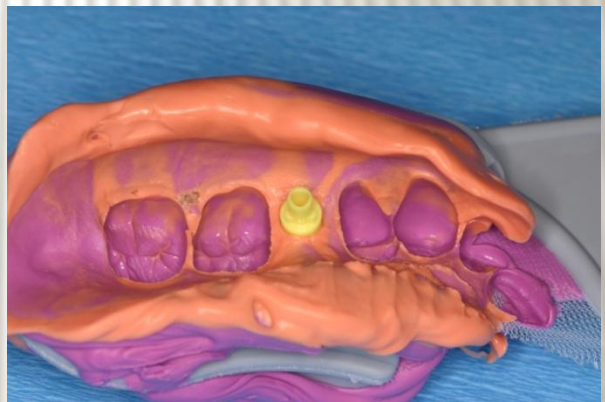
CUSTOM ABUTMENTS

- ❑ In this case, the implant and healing abutment are placed
- ❑ The tissue healed around the abutment
- ❑ That is not an anatomic shape



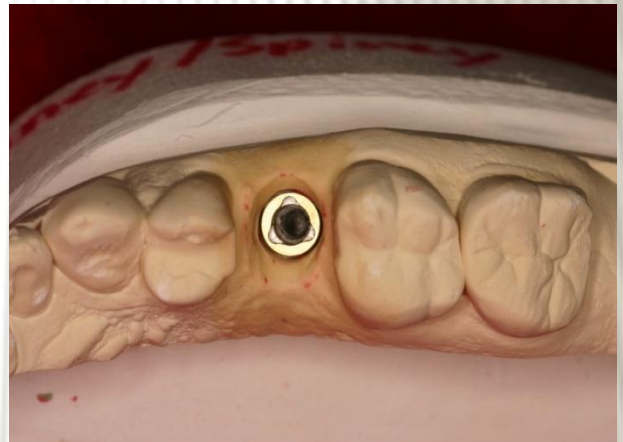
CUSTOM ABUTMENTS

- ❑ A stock, plastic impression coping is placed
- ❑ A “triple tray” impression is made



CUSTOM ABUTMENTS

- ❑ The cast is poured
- ❑ Since the impression is not anatomic, the cast was modified
- ❑ The abutment is waxed up on a “waxing sleeve”



CUSTOM ABUTMENTS

- ❑ The wax up is scanned
- ❑ The Zirconium Oxide abutment is returned
- ❑ The abutment on the cast is ready for crown fabrication



CUSTOM ABUTMENTS

- ❑ The final crown is made
 - ❑ The final crown can be PFM or any version of “all ceramic”
 - ❑ This crown is a Procera, Aluminum Oxide core/crown



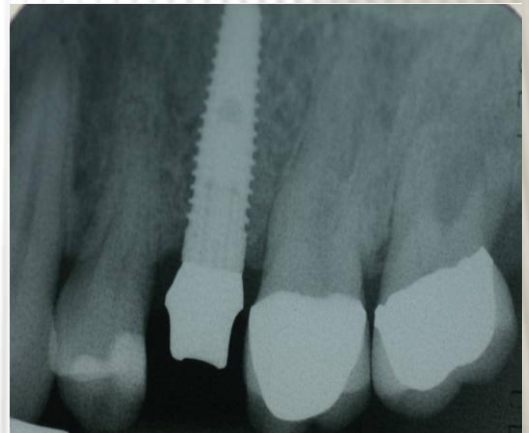
CUSTOM ABUTMENTS

- ❑ The Procera, Zirconium Oxide abutment is delivered
- ❑ The Procera, Aluminum Oxide crown is delivered



CUSTOM ABUTMENTS

- ❑ X-rays
 - ❑ Zirconium Oxide abutment is radio-opaque
 - ❑ Aluminum Oxide crown is radiolucent



NOBEL ACTIVE IMPLANT, PROCERA ZIRCONIUM ABUTMENT AND CROWN

- ❑ Nobel Active Implant
 - ❑ Tooth #9 has an endodontic abscess and root fracture
 - ❑ It is extracted and an implant is placed



NOBEL ACTIVE IMPLANT, PROCERA ZIRCONIUM ABUTMENT AND CROWN

- ❑ Nobel Active Implant
 - ❑ Temporary cylinder day of placement
 - ❑ Temporary crown
 - ❑ Under contour shape
 - ❑ No occlusion



NOBEL ACTIVE IMPLANT, PROCERA ZIRCONIUM ABUTMENT AND CROWN

- ❑ Nobel Active Implant
 - ❑ Tissue healing and development after 4 months
 - ❑ Custom abutment



NOBEL ACTIVE IMPLANT, PROCERA ZIRCONIUM ABUTMENT AND CROWN

- Nobel Active
 - Final restoration
 - Procera Zirconium Oxide abutment, Procera Aluminum Oxide crown



CUSTOM ABUTMENTS

- ❑ This case involves natural teeth and implants
- ❑ The implants are angled too far to the facial
- ❑ Zirconium Oxide abutments are made to correct for the angle



CUSTOM ABUTMENTS

- ❑ Aluminum Oxide cores are made on the abutments and natural teeth



CUSTOM ABUTMENTS

- Porcelain is added to the cores



CUSTOM ABUTMENTS

- ❑ Procera
Zirconium
Oxide custom
abutments
and Procera
Aluminum
Oxide crowns
- ❑ Case delivered



CUSTOM ABUTMENTS

- Delivery

- Procera Zirconium Oxide Abutments
- Procera Aluminum Oxide Crowns



CUSTOM ABUTMENTS

- ❑ Tooth 8 has an implant with a temporary crown
- ❑ The temporary post and crown has developed nice gingival anatomy, so we want to duplicate that in the final restoration



CUSTOM ABUTMENTS

- ❑ An impression post is placed on the implant
- ❑ Composite is added at the cervical to begin “customizing” the impression post



CUSTOM ABUTMENTS

- ❑ The impression post is further modified to represent the tissue anatomy
- ❑ A final impression is made with the custom impression post on the implant



CUSTOM ABUTMENTS

- ❑ A cast is poured
- ❑ I like a solid stone cast, not a “soft tissue” cast
- ❑ A waxing sleeve will be attached to the implant
- ❑ This sleeve needs modification



CUSTOM ABUTMENTS

- ❑ The waxing sleeve is modified
- ❑ The “before” and “after” sleeves are shown



CUSTOM ABUTMENTS

- ❑ The cast is lubricated
- ❑ The modified waxing sleeve is attached to the implant analog



CUSTOM ABUTMENTS

- ❑ The abutment is “waxed up” on the cast
- ❑ In this case, I didn’t use wax, I used “block out resin”



CUSTOM ABUTMENTS

- ❑ The pattern was scanned
- ❑ An abutment was ordered



CUSTOM ABUTMENTS

- ❑ The Procera Zirconium Oxide custom abutment
- ❑ Crown



CUSTOM ABUTMENTS

- ❑ The Procera Zirconium Oxide custom abutment
- ❑ Crown



CUSTOM ABUTMENTS

- ❑ The Procera Zirconium Oxide custom abutment
- ❑ Crown

