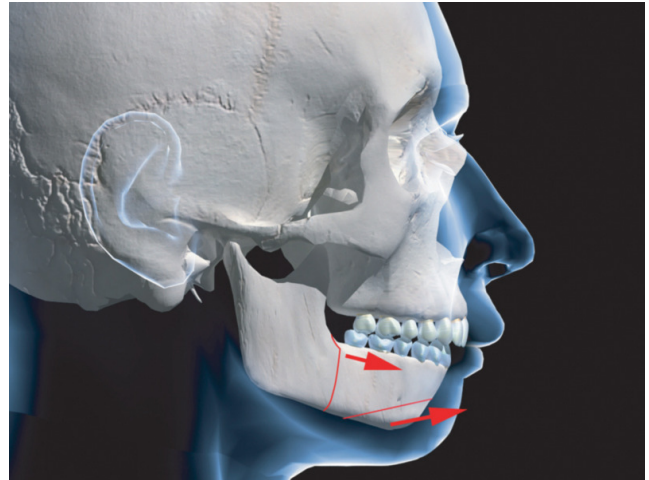


Facial Surgery - Correcting Class II

During the development phase of the teeth and facial structures, the upper and lower jaws may grow at different rates, resulting in an improper bite and incorrectly positioned jaw bones. This diagram demonstrates a Class II relationship, where the lower jaw is positioned far back from the upper jaw, resulting in a receding lower jaw. The upper teeth are tipped inwards.



Facial surgery is done under a general anesthetic to reposition the jaw bones into the correct relationship.

Facial surgery can not only correct jaw discrepancies, but can also dramatically change the facial structures and improve one's appearance.

