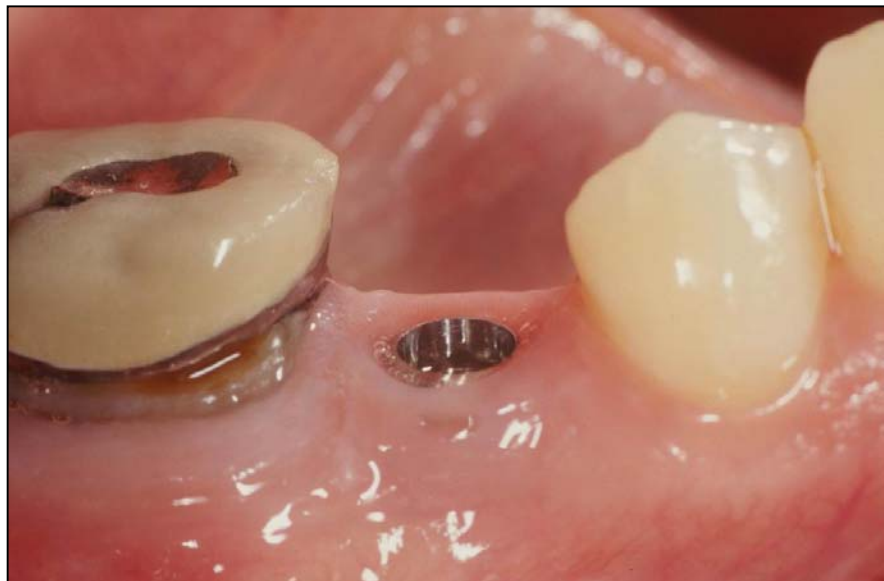


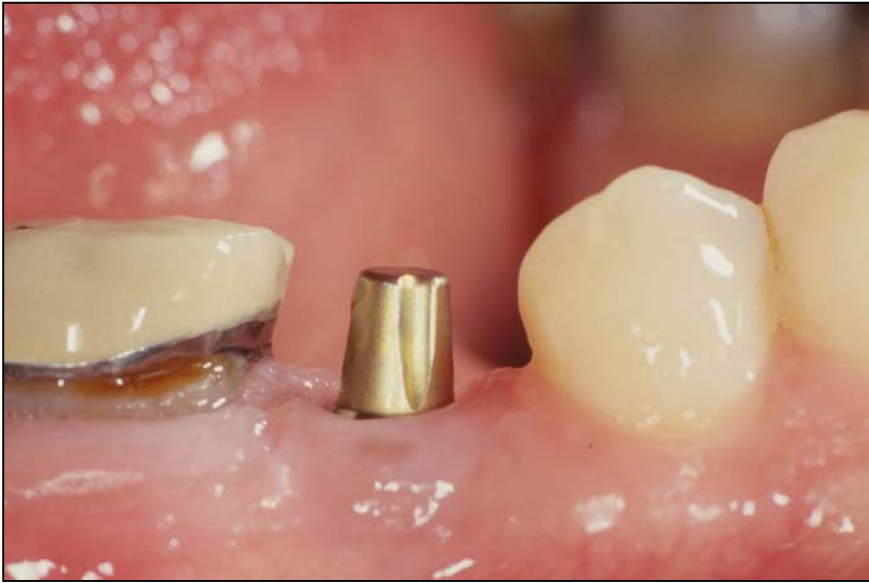
*Provisional Fabrication Technique:
Solid abutment on the ITI Dental Implant*



Patient Presentation: Six-week loading of an *Esthetic Plus Solid Screw* ITI Dental Implant.



Step 1:
Remove the SCS healing cap.



Step 2:
Select a solid abutment for interocclusal clearance (4,5.5,7 mm) and torque it to 35 Ncm.



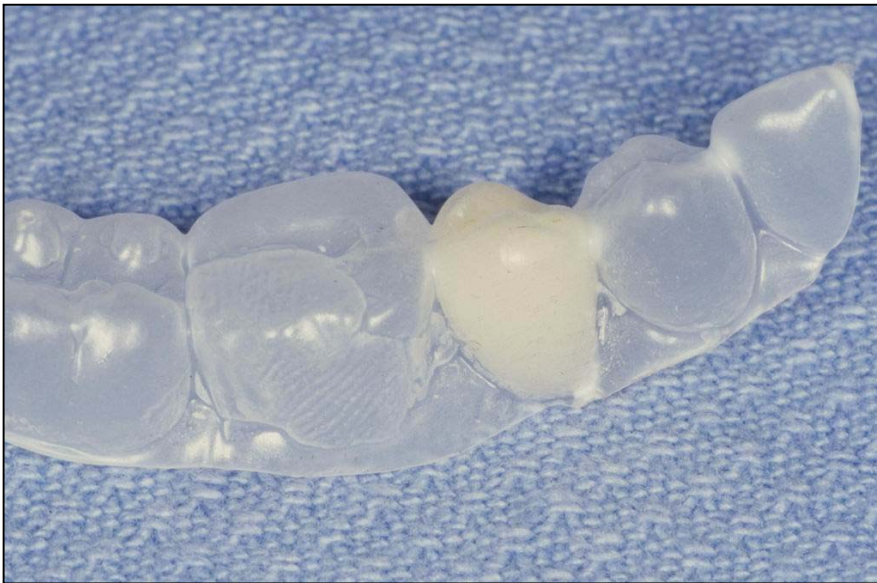
Step 3:
Using your preferred provisional material, shape a dome on the solid abutment's corresponding laboratory analog. (This can be done prior to the patient appointment).



Step 4:
Once set, remove the coping and confirm margins.



Step 5:
Seat the coping on the
implant and adjust for
interocclusal clearance.



Step 6:
Place the same provisional
material in the
corresponding vacuform
matrix.



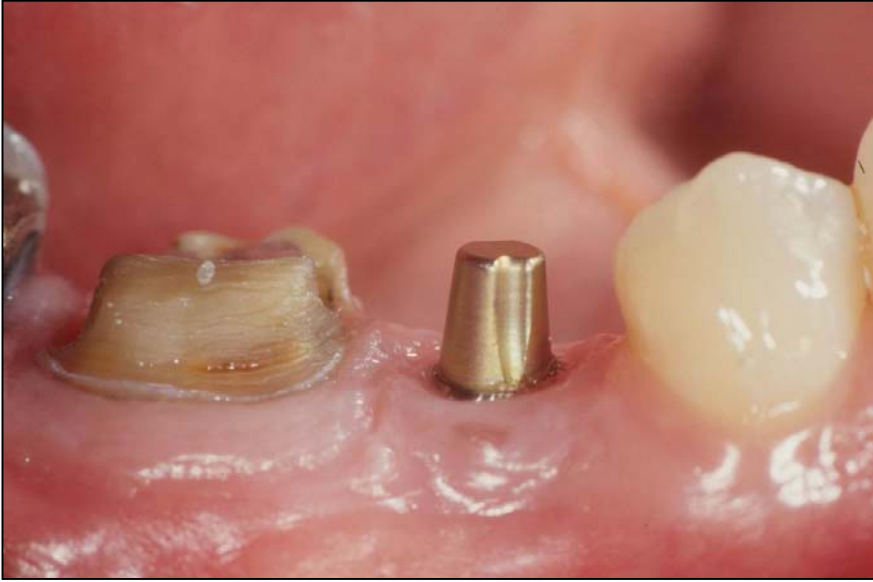
Step 7:
Seat the matrix in the
mouth and allow it to fully
polymerize (be sure to
block out any undercuts).



Step 8:
Place the provisional on the laboratory analog and trim away excess material. Add material to fill in deficits made from tissue impingement (see arrow).



Step 9:
Once completed, the provisional should emerge off the analog to allow for ideal soft tissue support.



Step 10:
Clinical view prior to
provisional placement.



Step 11:
Provisional cemented with
interim cement. Two-
weeks out.